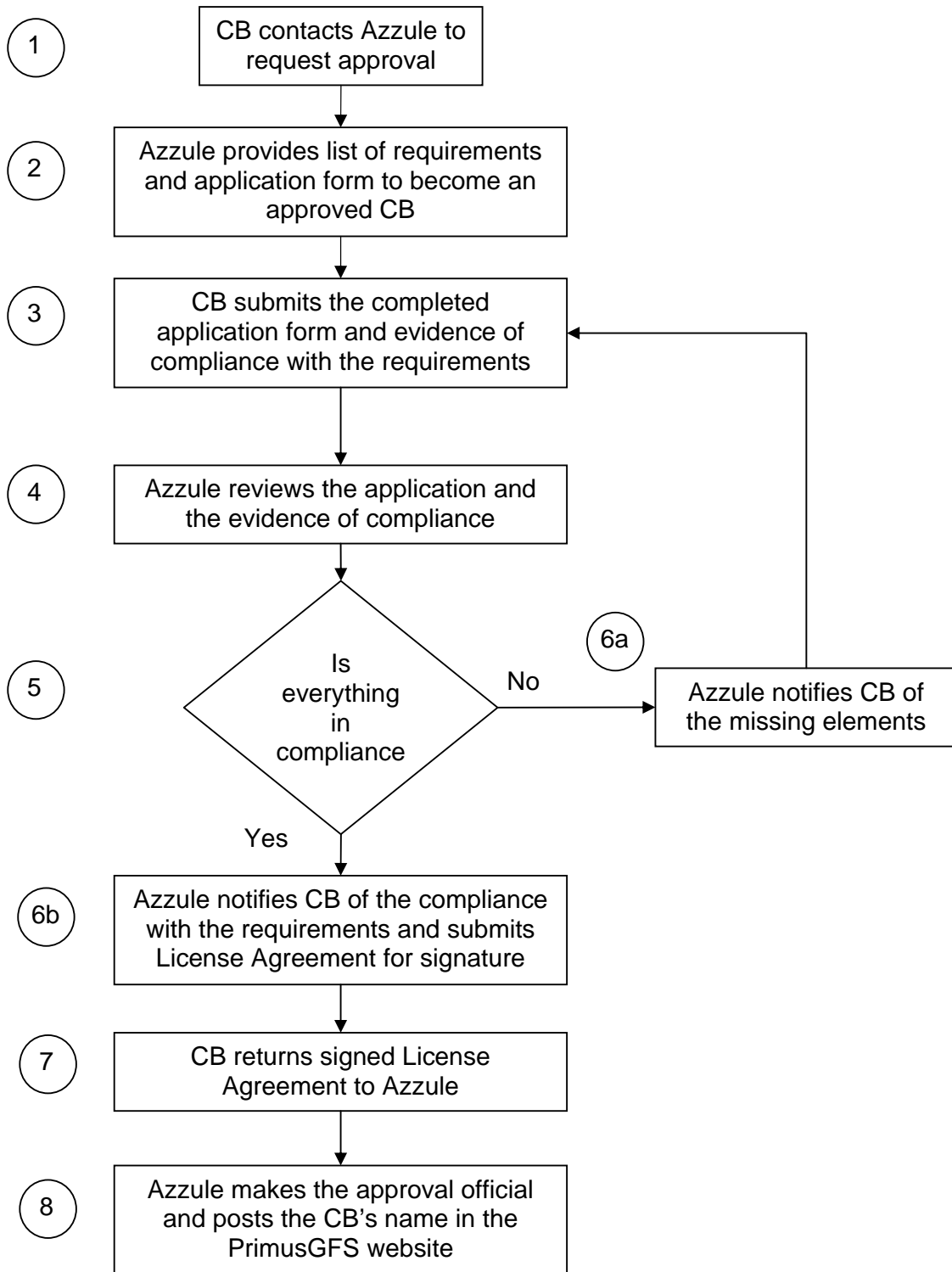


How to become an approved CB?



Description of activities in the flow chart.

#	Activity		Performed by	Related documents
1	CB contacts Azzule to request approval		CB representative	N/A – it can be done by phone or email
2	Azzule provides list of requirements and application form to become an approved CB		Azzule Representative	<ul style="list-style-type: none"> List of requirements to become an approved CB CB application form
3	CB submits the completed application form and evidence of compliance with the requirements *		CB representative	N/A – it can be done by email or fax. Original of the signed application form must be obtained at some point.
4	Azzule reviews the application and the evidence of compliance with the requirements *		Azzule Representative	N/A
5	Is everything in compliance with the requirements *?		N/A	N/A
6a	NO	Azzule notifies CB of the missing elements	Azzule Representative	N/A – it can be done by email or fax
6b	YES	Azzule notifies CB of the compliance with the requirements * and submits License Agreement for signature	Azzule Representative	<ul style="list-style-type: none"> License Agreement with CB's details
7	CB returns signed License Agreement to Azzule		CB representative	<ul style="list-style-type: none"> Original of the signed License Agreement from CB
8	Azzule makes the approval official and posts the CB's name in the PrimusGFS website		Azzule Representative	<ul style="list-style-type: none"> CB Approval letter with CB's details Posting of CB's name in PrimusGFS website

* The requirements for a CB to become approved for the PrimusGFS Scheme are based on the PrimusGFS General Regulations, Section 4 - Guidance for the Management of Certification Bodies which on v1.6 describe:

- The Certification Body, as a minimum must have been accredited according to the ISO 65/EN45011 guide (or its equal depending on the submission country) for the scope of PrimusGFS. The Accreditation Body must be affiliated to the International Accreditation Forum.
- In certain occasions, where the Certification Body has an ISO 65/EN45011 accreditation or its equal, and a scope modification or extension is requested to the Accreditation Body to include PrimusGFS, the Certification Body must provide written evidence to Azzule of such circumstances in order to notify of the pending process.